



# **ADAPTER SLEEVE PRODUCT CATALOGUE**



Powered by



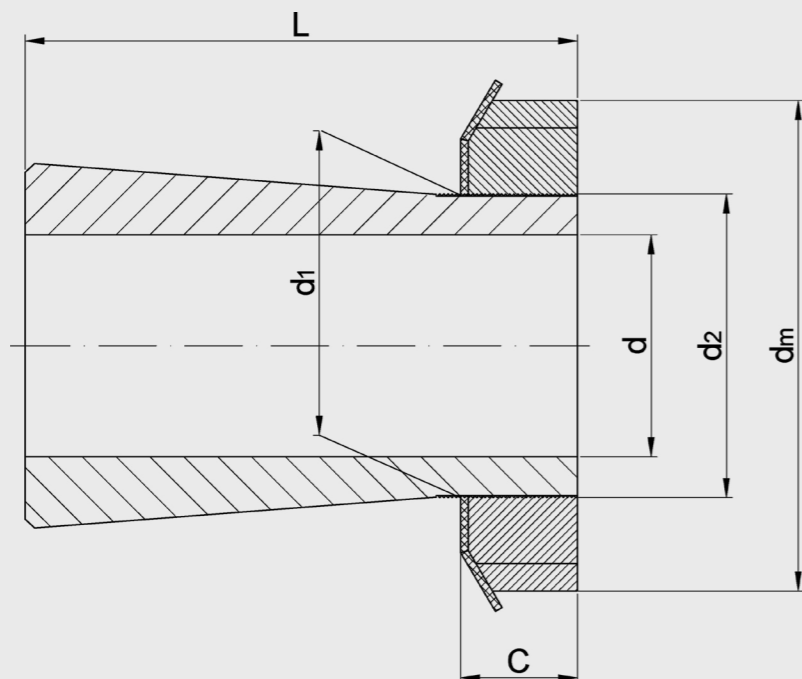
# Adapter Sleeves

- Adapter sleeves are designed for mounting bearings with a tapered bore onto a cylindrical shaft. They simplify installation and, in many cases, the overall bearing assembly design.
- Since adapter sleeves are matched to the shaft diameter, relatively wide shaft tolerances are permissible. However, form tolerances must be tighter because the sleeve geometry affects the bearing's operating geometry. Generally, a shaft diameter tolerance of h9 is adequate, but the cylindricity requirement of the shaft is stricter and must meet IT5.

Z&S Adapter sleeves feature :

- Manufactured from high-quality steel,
- Very precise geometry, and Excellent price/performance ratio.
- The Z&S range of adapter sleeves covers all necessary sizes and the most commonly used Z&S bearing series. Z&S adapter sleeves are supplied complete with the nut and locking washer. The sleeves are split and have a taper of 1:12. Sizes up to and including 30 mm are protected by blackening, while larger sizes are left bright and lightly oiled.
- The dimensions of the adapter sleeves comply with ISO 2982-1:2013

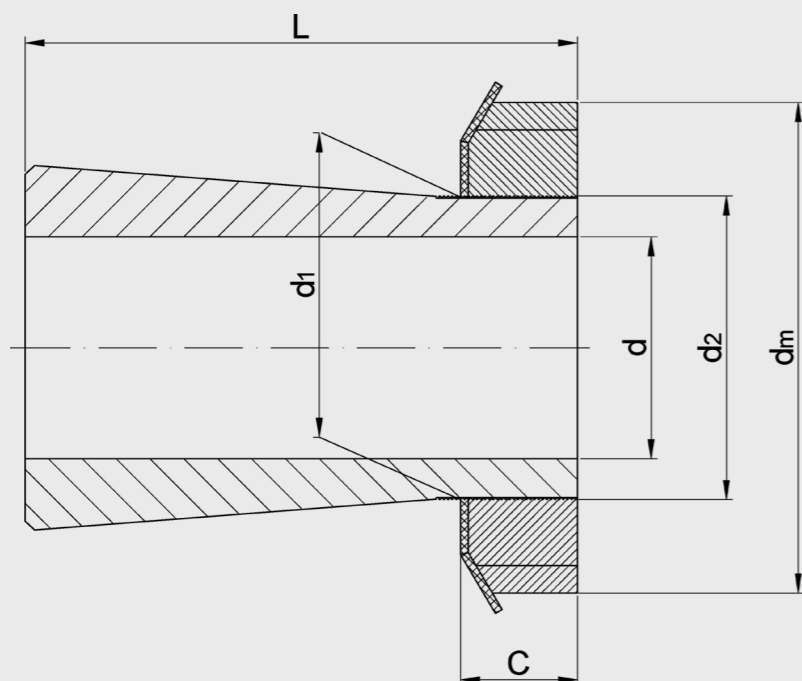
# ADAPTER SLEEVES WITH LOCK NUT AND LOCK WASHER



Shaft		Dimensions (mm)						Mass	Designation
mm	inch	d	d <sub>1</sub>	d <sub>m</sub>	C	d <sub>2</sub>	L	kg	
17		17	20	32	7	M20X1,5	24	0,04	H 204
		17	20	32	7	M20X1,5	28	0,05	H 304
		17	20	32	7	M20X1,5	31	0,05	H 2304
20		20	25	38	9	M25X1,5	26	0,07	H 205
		20	25	38	9	M25X1,5	29	0,08	H 305
		20	25	38	9	M25X1,5	35	0,09	H 2305
25		25	30	45	9	M30X1,5	27	0,10	H 206
		25	30	45	9	M30X1,5	31	0,11	H 306
		25	30	45	9	M30X1,5	38	0,13	H 2306
30	1	25,4	30	45	9	M30X1,5	27	0,10	H 206-100
		25,4	30	45	9	M30X1,5	31	0,11	H 306-100
		30	40	58	11	M35X1,5	29	0,13	H 207
30		30	40	58	11	M35X1,5	35	0,14	H 307
	1¼	30	40	58	11	M35X1,5	43	0,17	H 2307
		31,75	40	58	11	M40X1,5	31	0,22	H 208-104
	31,75	40	58	11	M40X1,5	36	0,24	H 308-104	

Shaft		Dimensions (mm)						Mass	Designation
mm	inch	d	d <sub>1</sub>	d <sub>m</sub>	C	d <sub>2</sub>	L	kg	
35		35	40	58	11	M40X1,5	31	0,17	H 208
		35	40	58	11	M40X1,5	36	0,19	H 308
	1½	35	40	58	11	M40X1,5	46	0,22	H 2308
40		38,1	45	65	12	M45X1,5	33	0,26	H 209-108
		38,1	45	65	12	M45X1,5	39	0,28	H 309-108
		38,1	45	65	12	M45X1,5	50	0,33	H 2309-108
40		40	45	70	12	M45X1,5	33	0,23	H 209
		40	45	70	12	M45X1,5	39	0,25	H 309
		40	45	70	12	M45X1,5	50	0,28	H 2309
45	1¼	44,45	50	70	13	M50X1,5	35	0,29	H 210-112
		44,45	50	70	13	M50X1,5	42	0,32	H 310-112
		45	50	70	13	M50X1,5	35	0,27	H 210
45		45	50	70	13	M50X1,5	42	0,30	H 310
		45	50	70	13	M50X1,5	55	0,36	H 2310
	50	50	55	75	14	M55X2	37	0,31	H 211
50		50	55	75	14	M55X2	45	0,35	H 311
	2	50	55	75	14	M55X2	59	0,42	H 2311
		50,8	55	75	14	M55X2	37	0,29	H 211-200
55		50,8	55	75	14	M55X2	45	0,32	H 311-200
		50,8	55	75	14	M55X2	59	0,39	H 2311-200
		55	60	80	14	M60X2	38	0,35	H 212
60		55	60	80	14	M60X2	47	0,39	H 312
		55	60	80	14	M60X2	62	0,48	H 2312
	2½	57,15	65	85	15	M65X2	40	0,48	H 213-204
60		57,15	65	85	15	M65X2	50	0,56	H 313-204
		60	65	85	15	M65X2	40	0,40	H 213
		60	65	85	15	M65X2	50	0,46	H 313
60		60	65	85	15	M65X2	65	0,56	H 2313
		60	70	92	15	M70X2	41	0,59	H 214
		60	70	92	15	M70X2	52	0,72	H 314
60		60	70	92	15	M70X2	68	0,90	H 2314
	2⅞	61,91	75	98	16	M75X2	55	0,96	H 315-207
	2½	63,5	75	98	16	M75X2	43	0,76	H 215-208
60		63,5	75	98	16	M75X2	55	0,90	H 315-208
		63,5	75	98	16	M75X2	73	1,14	H 2315-208

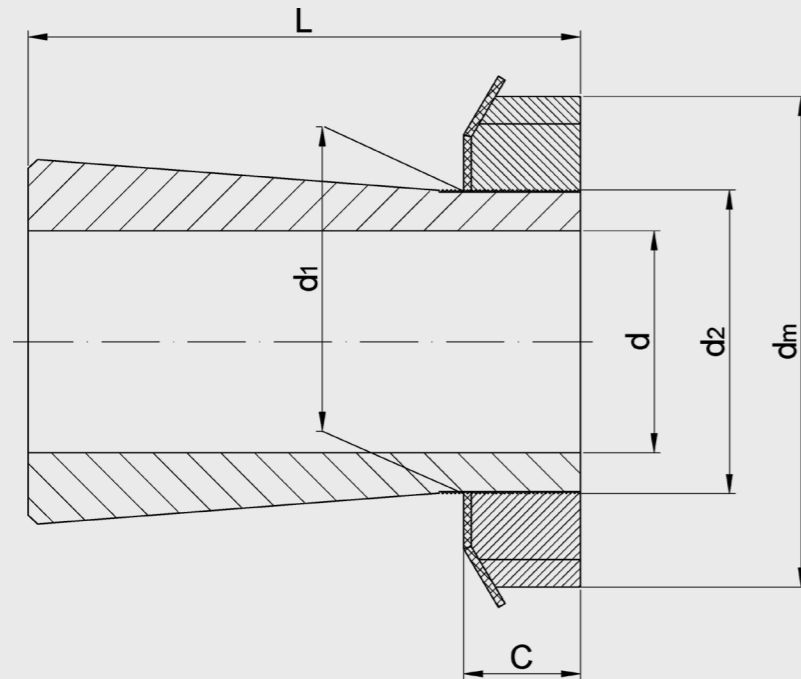
# ADAPTER SLEEVES WITH LOCK NUT AND LOCK WASHER



Shaft		Dimensions (mm)						Mass	Designation
mm	inch	d	d <sub>1</sub>	d <sub>m</sub>	C	d <sub>2</sub>	L	kg	
<b>65</b>		65	75	98	16	M75X2	43	0,71	<b>H 215</b>
		65	75	98	16	M75X2	55	0,83	<b>H 315</b>
		65	75	98	16	M75X2	73	1,05	<b>H 2315</b>
	2 <sup>3</sup> / <sub>4</sub>	69,85	80	105	18	M80X2	46	0,89	<b>H 216-212</b>
		69,85	80	105	18	M80X2	59	1,04	<b>H 316-212</b>
<b>70</b>		70	80	105	18	M80X2	46	0,88	<b>H 216</b>
		70	80	105	18	M80X2	59	1,03	<b>H 316</b>
		70	80	105	18	M80X2	78	1,28	<b>H 2316</b>
	2 <sup>15</sup> / <sub>16</sub>	74,61	85	110	19	M85X2	63	1,20	<b>H 317-215</b>
<b>75</b>		75	85	110	19	M85X2	50	1,02	<b>H 217</b>
		75	85	110	19	M85X2	63	1,18	<b>H 317</b>
		75	85	110	19	M85X2	82	1,45	<b>H 2317</b>
	3	76,2	85	120	19	M85X2	50	0,96	<b>H 217-300</b>
		76,2	85	120	19	M85X2	63	1,11	<b>H 317-300</b>
		76,2	85	120	19	M85X2	82	1,36	<b>H 2317-300</b>

Shaft		Dimensions (mm)						Mass	Designation	
mm	inch	d	d <sub>1</sub>	d <sub>m</sub>	C	d <sub>2</sub>	L	kg		
80		80	90	120	19	M90X2	52	1,19	<b>H 218</b>	
		80	90	120	19	M90X2	65	1,37	<b>H 318</b>	
		80	90	120	19	M90X2	86	1,69	<b>H 2318</b>	
	3 <sup>3</sup> / <sub>4</sub>	82,55	90	120	19	M90X2	52	1,06	<b>H 218-304</b>	
		82,55	90	120	19	M90X2	65	1,20	<b>H 318-304</b>	
85		85	95	125	20	M95X2	55	1,37	<b>H 219</b>	
		85	95	125	20	M95X2	68	1,56	<b>H 319</b>	
		85	95	125	20	M95X2	90	1,92	<b>H 2319</b>	
	3 <sup>7</sup> / <sub>16</sub>	87,31	100	130	21	M100X2	71	1,90	<b>H 320-307</b>	
	3 <sup>1</sup> / <sub>2</sub>	88,9	100	130	21	M100X2	58	1,37	<b>H 220-308</b>	
		88,9	100	130	21	M100X2	71	1,56	<b>H 320-308</b>	
		88,9	100	130	21	M100X2	97	1,92	<b>H 2320-308</b>	
90		90	100	130	21	M100X2	58	1,49	<b>H 220</b>	
		90	100	130	21	M100X2	71	1,69	<b>H 320</b>	
		90	100	130	21	M100X2	76	1,80	<b>H 3120</b>	
		90	100	130	21	M100X2	97	2,15	<b>H 2320</b>	
95		95	105	140	20	M105X2	60	1,72	<b>H 221</b>	
		95	105	140	20	M105X2	74	1,95	<b>H 321</b>	
100		100	110	145	21	M110X2	63	63	<b>H 222</b>	
		100	110	145	21	M110X2	77	77	<b>H 322</b>	
		100	110	145	21	M110X2	81	81	<b>H 3122</b>	
		100	110	145	21	M110X2	105	105	<b>H 2322</b>	
		3 <sup>15</sup> / <sub>16</sub>	100,01	110	145	21	M110X2	77	77	<b>H 322-315</b>
		4	101,6	110	145	21	M110X2	77	77	<b>H 322-400</b>
		101,6	110	145	21	M110X2	105	105	<b>H 2322-400</b>	
	4 <sup>1</sup> / <sub>4</sub>	107,95	120	155	22	M120X2	88	88	<b>H 3124-404</b>	
<b>110</b>		110	120	145	22	M120X2	72	1,93	<b>H 3024</b>	
		110	120	155	22	M120X2	88	2,64	<b>H 3124</b>	
		110	120	155	22	M120X2	112	3,19	<b>H 2324</b>	
		4 <sup>7</sup> / <sub>16</sub>	112,71	130	165	23	M130X2	92	3,95	<b>H 3126-407</b>
		4 <sup>1</sup> / <sub>2</sub>	114,3	130	165	23	M130X2	92	3,75	<b>H 3126-408</b>
			114,3	130	165	23	M130X2	121	4,72	<b>H 2326-408</b>

# ADAPTER SLEEVES WITH LOCK NUT AND LOCK WASHER



Shaft		Dimensions (mm)						Mass	Designation
mm	inch	d	d <sub>1</sub>	d <sub>m</sub>	C	d <sub>2</sub>	L	kg	
115		115	130	155	23	M130X2	80	2,85	H 3026
		115	130	165	23	M130X2	92	3,66	H 3126
		115	130	165	23	M130X2	121	4,60	H 2326
125		125	140	165	24	M140X2	82	3,16	H 3028
		125	140	180	24	M140X2	97	4,34	H 3128
		125	140	180	24	M140X2	131	5,55	H 2328
	4 <sup>15</sup> / <sub>16</sub>	125,41	140	180	24	M140X2	97	4,28	H 3128-415
	5	127	140	180	24	M140X2	97	4,04	H 3128-500
		127	140	180	24	M140X2	131	5,14	H 2328-500
135		135	150	180	26	M150X2	87	3,89	H 3030
		135	150	195	26	M150X2	111	5,52	H 3130
		135	150	195	26	M150X2	139	6,63	H 2330
	5 <sup>7</sup> / <sub>16</sub>	138,11	160	210	28	M160X3	119	8,05	H 3132-507
	5 <sup>1</sup> / <sub>2</sub>	139,7	160	210	28	M160X3	119	7,73	H 3132-508

Shaft		Dimensions (mm)						Mass	Designation
mm	inch	d	d <sub>1</sub>	d <sub>m</sub>	C	d <sub>2</sub>	L	kg	
140		140	160	190	28	M160X3	93	5,21	H 3032
		140	160	210	28	M160X3	119	7,67	H 3132
		140	160	210	28	M160X3	147	9,14	H 2332
150		150	170	200	29	M170X3	101	5,99	H 3034
		150	170	220	29	M170X3	122	8,38	H 3134
		150	170	220	29	M170X3	154	10,2	H 2334
	5 <sup>15</sup> / <sub>16</sub>	150,81	170	220	29	M170X3	122	8,20	H 3134-515
	6	152,4	170	220	29	M170X3	122	7,83	H 3134-600
160		160	180	210	30	M180X3	109	6,83	H 3036
		160	180	230	30	M180X3	131	9,50	H 3136
		160	180	230	30	M180X3	161	11,3	H 2336
170		170	190	220	31	M190X3	112	7,45	H 3038
		170	190	240	31	M190X3	141	10,8	H 3138
		170	190	240	31	M190X3	169	12,6	H 2338
180		180	200	240	32	M200X3	120	9,19	H 3040
		180	200	250	32	M200X3	150	12,1	H 3140
		180	200	250	32	M200X3	176	13,9	H 2340

## EDITORIAL TEAM

### **Đuro Grabež**

Chief Editor / Project Lead

### **Mile Mijušković**

Chief Managing Editor

### **Filip Paško**

Chief Technical Editor

© [Z&S Bearings Production], [2026].

*All rights reserved. No part of this publication may be reproduced, distributed, transmitted, stored in a retrieval system, or otherwise used in any form or by any means—electronic, mechanical, photocopying, recording, or otherwise—without the prior written permission of the author.*

*This publication is protected by applicable copyright laws of the Republic of Serbia and international copyright conventions.*

CIP - Katalogizacija u publikaciji  
Biblioteke Matice srpske, Novi Sad  
ADAPTER sleeve product catalogue [Elektronski izvor] / [chief editor Đuro Grabež]. -  
Temerin : Živko & Sinovi, 2026  
658.114:621.822.6(497.113 Temerin)(085)  
ISBN 978-86-83318-06-3  
a) Živko i Sinovi (Temerin) -- Katalozi  
COBISS.SR-ID 186638857

*Committed to Quality Since 1992*

---

AFI City Zmaj, 11000 Belgrade, Serbia  
+381 11 7753757  
office@zs-bearings.com  
zs-bearings.com

© Z&S Bearings, Edition 2026



**AFI City Zmaj, 11080 Belgrade, Serbia**

**+381 11 7753757**

**[office@zs-bearings.com](mailto:office@zs-bearings.com)**

**[www.zs-bearings.com](http://www.zs-bearings.com)**